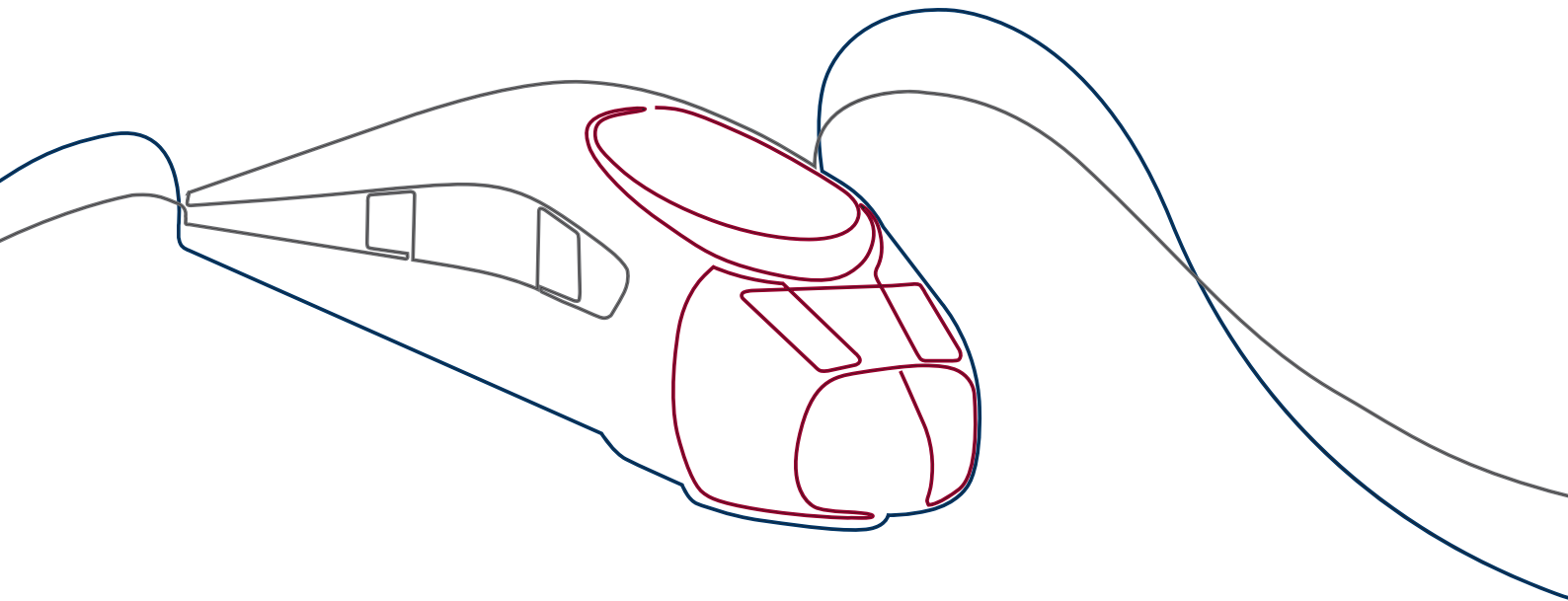


CONNECTORS UIC 552 M1 SERIES



CONNECTORS UIC 552 M1 SERIES



PRODUCT INFO

UIC 552 connectors are needed for all rail vehicles used in international transport, including traction units equipped with a train line.

In order to achieve this technically appropriate connectors are needed between the traction unit and all the other rail vehicles. The connector complies with UIC 552 requirements.

FIELDS OF APPLICATION

- In local and long distance trains. For electrical connections according to UIC 552
- Refitting of train line
- Refurbishments of rail vehicles
- Used whenever spare parts are needed
- Compatible with all systems on the market according to UIC 552

FUNCTION

- Current transmission of 800 A at -10 °C at a rated temperature of -10 °C
- voltage of 3 kV AC/DC and voltage peaks of 3.9 kV
- Protection against dust and moisture according to protection class IP56
- Protection against unintentional disconnection
- Very robust under mechanical load

Commitment to quality: We supply this product in accordance with our tested and certified quality standard



DIN EN ISO 9001:2015
Certified
Quality Management System



DIN EN 15085-2 CL1
International welding
certification for railway
vehicles

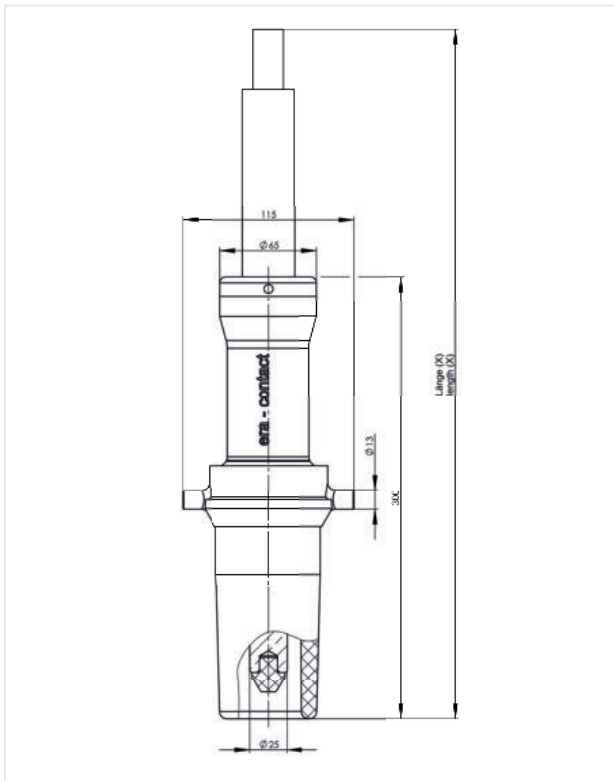


IRIS Certification® based on ISO/TS 22163:2017
Quality management standard
for the railway industry

TECHNICAL SPECIFICATIONS UIC 552 M1 SERIES

SPECIFICATION	DESCRIPTION	VALUES & DATA
Standards	UIC 552 Protection type (EN 60529)	IP56: coupled or receptacle closed, higher IP protection beyond the standard possible on request
Type of connection	Number of poles Connection cross-section Connection to socket contact Connection to plug contact	1 185 mm ² M16 bolted connection Crimped connection
Electrical characteristics	Rated voltage Max. rated voltage Rated current	3 kV AC / DC 3.9 kV 800 A at -10 °C
Mechanical characteristics	Insertion force Extraction force	> 200 N > 100 N
Operating conditions	Operating temperature range	-50 °C ... +85 °C
Materials	Housing of plug Housing of receptacle Upper plug section Contact insert Seals Contacts	Aluminium casting Aluminium casting Duroplast Duroplast Chloroprene rubber, EPDM, Silicone-Elastomere Copper alloy
Weights	Plug (without cable) Receptacle Cable junction box Junction box Dummy receptacle	approx. 3 kg approx. 17 kg approx. 8 kg approx. 11 kg approx. 2 kg

PLUGS & CONNECTION CABLES



Product info

Our plugs are equipped with high-quality components for power transmission up to 800 A. This product for the train line is therefore ideal for high functional and safety requirements in the long term.

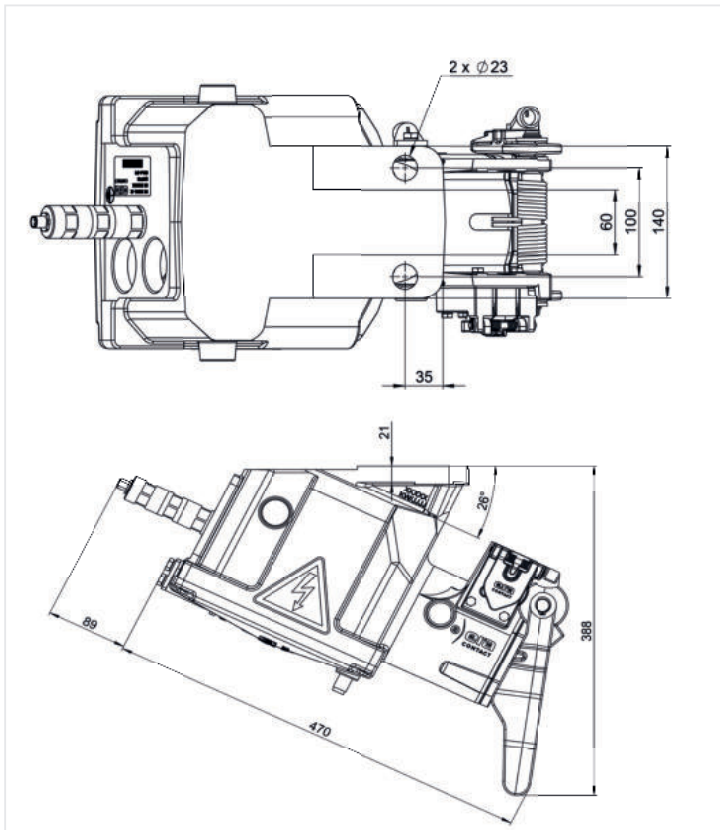


Plug UIC 552 M1: deep black, RAL 9005

TYPE	ORDER CODE	DESCRIPTION
DESIGN	UIC 552 M1 series	The connector in accordance with UIC 552 is used for energy transmission for the train line.
PRODUCT	UIC552-M1-S-RALXXXX	UIC 552 M1 plug without any cables, color: deep black RAL 9005 or concrete-grey RAL 7023 (Other colors in customer request).
	UIC552-M1-VS-LXXXX-RALXXXX	UIC 552 M1 jumper cable with two plugs; cable length according to customer requirements, color: deep black RAL 9005 or concrete-grey RAL 7023 (Other colors on customer request).
	UIC552-M1-AS-LXXXX-RALXXXX	UIC 552 M1 connector cable with a plug; cable length according to customer requirements, color: deep black RAL 9005 or concrete-grey RAL 7023 (Other colors on customer request).

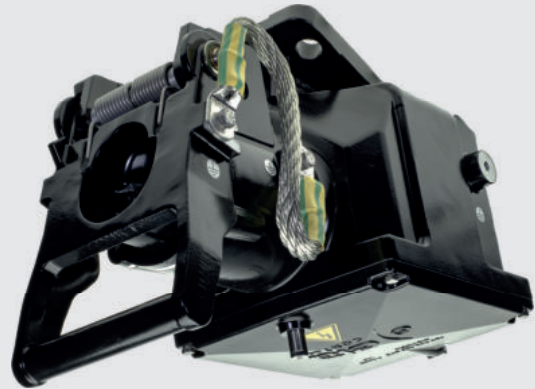
Technical data subject to change.

RECEPTACLE (KDO)



Product info

Our receptacle with its solid metal handle ensures a safe engagement of the plug for permanent operation under harsh conditions. The locking device protects against unauthorised opening.



Receptacle UIC 552 M1: deep black, RAL 9005

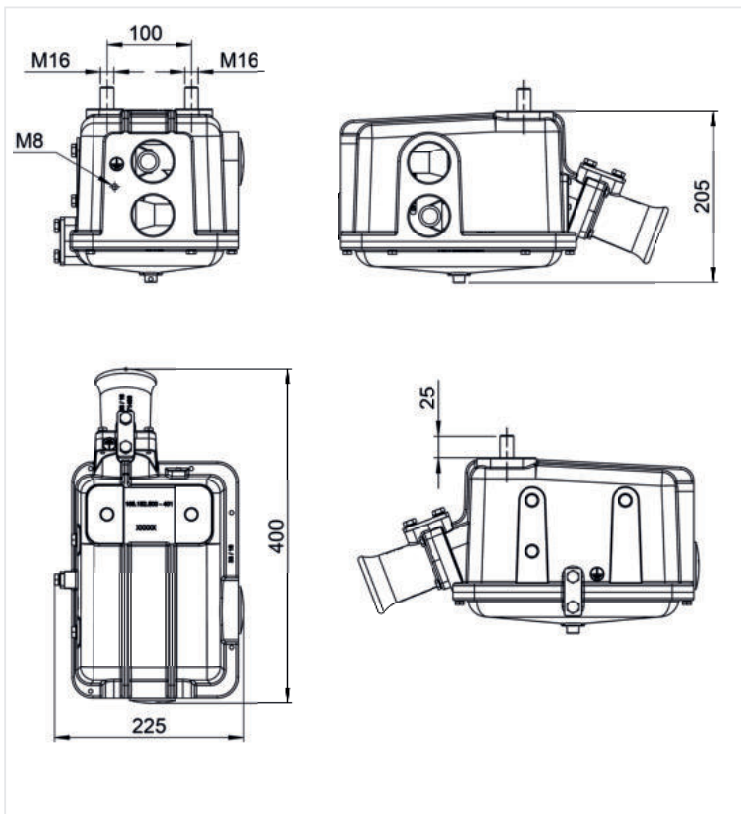
Order options

Design	UIC 552 M1 series	
Type	KDO	Receptacle
Latch	VX	V0 = w/o locking device V1 = w/ locking device
Pilotkontakt	PX	P0 = w/o pilot contact P1 = w/ pilot contact
Threaded holes:	LXXX, RXXX, HXXX	threaded holes can be used according to customer requirements
Color	RALXXXX	deep black, RAL 9005 concrete-grey, RAL 7023 (Other colours on request)

Due to the high variation possibilities in the customer assembly of the **receptacle UIC 552 M1 series**, the order code will be generated for you by our sales team - this is how we can provide you with the best product for you.

Technical data subject to change.

CABLE JUNCTION BOX (KAK)



Product info

Our robust cable junction box is a safe interface for an easy and permanent connection of cables of the receptacles.



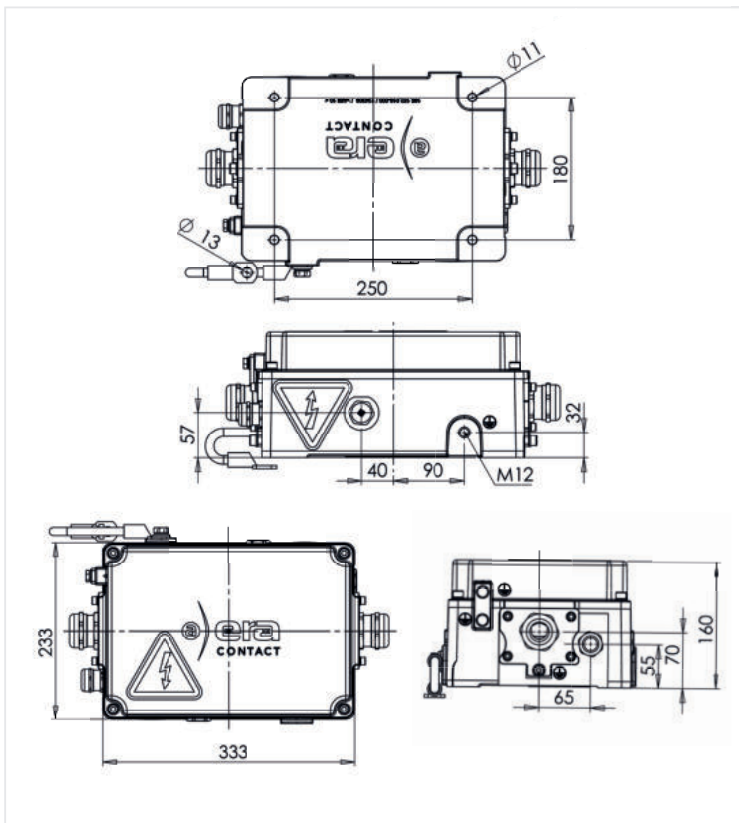
Cable junction box UIC 552 M1:
deep black, RAL 9005

Order options:

Design	UIC 552 M1 series	
Type	KAK	Cable junction box
Threaded holes:	LXXX, RXXX, HXXX	threaded holes can be used according to customer requirements
Color	RALXXXX	deep black, RAL 9005 concrete-grey, RAL 7023 (Other colours on request)

Due to the high variation possibilities in the customer assembly of the **cable junction box UIC 552 M1 series**, the order code will be generated for you by our sales team - this is how we can provide you with the best product for you.

JUNCTION BOX (AZK)



Product info

Our junction box is a safe interface for the connection of cables between cable junction boxes and other cables for power transmission.



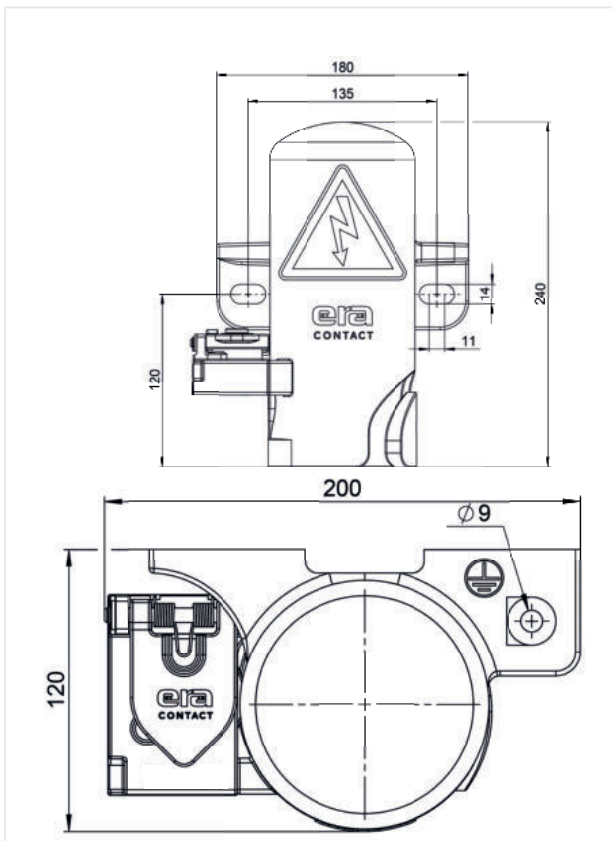
Junction box UIC 552 M1:
deep black, RAL 9005

Order options:

Design	UIC 552 M1 series	
Type	AZK	Junction box
Threaded holes:	MXX	M40, M50, other threaded holes on request
Version 1	V1	Version without flange
Version 2	V2	Version with flange, enables pre-assembled cables to be mounted in the AZK
Color:	RALXXXX	deep black, RAL 9005 concrete-grey, RAL 7023 (Other colours on request)

Due to the high variation possibilities in the customer assembly of the **junction box UIC 552 M1 series**, the order code will be generated for you by our sales team - this is how we can provide you with the best product for you.

DUMMY RECEPTACLE (BDO)



Product info

For a permanent functionality, our proven dummy receptacle is used as mounting socket for the coupling plug to protect it in uncoupled condition from unintentional environmental influences.



Dummy receptacle UIC 552 M1: deep black, RAL 9005

TYPE	ORDER CODE	DESKRIPTION
DESIGN	UIC 552 M1 series	dummy receptacle according to UIC 552 for the reception of the plug in the non-used state.
PRODUCT	UIC552-M1-BDO-VX RALXXXX	UIC 552 M1 dummy receptacle (BDO) + optional: locking device (no: V0/ yes: V1); color: deep black RAL 9005 or concrete-grey RAL 7023 (Other colours on request).



OUR BENEFITS FOR YOU:

- Punctuality
- Consistently high quality all over the world
- Comprehensive service wherever you are in the world
- Years of expertise for your product
- International presence
- On-site engineering service – from prototyping to after-sales
- Original manufacturer
- A team just for you



www.aichele-group.com
www.bremi.de
www.era-contact.com
www.streicherplast.de

aichele GROUP
 GmbH + Co. KG
 Gewerbestraße 44
 75015 Bretten
 Deutschland / Germany
 Phone +49 (0)70 32 - 9 55 30 0
 info@aichele-group.com

BREMI Fahrzeug-Elektrik
 GmbH + Co. KG
 Grüner Weg 1
 19303 Dömitz
 Deutschland / Germany
 Phone +49 (0)38 758 - 304 0
 info@bremi.de

BREMI Fahrzeug-Elektrik
 GmbH + Co. KG
 Vertriebs- und Logistikzentrum
 Einsteinstraße 1
 71083 Herrenberg
 Deutschland / Germany
 Phone +49 (0)70 32 - 955 30 0
 info@bremi.de

streicherplast GmbH + Co. KG
 Friedhofstraße 4
 78588 Denkingen
 Deutschland / Germany
 Phone +49 (0)74 24 98 17-0
 info@streicherplast.de

era-contact GmbH Germany
 Gewerbestraße 44
 75015 Bretten-Gölshausen
 Deutschland / Germany
 Phone +49 (0)72 52 - 971 0
 info.germany@era-contact.de

era-contact Tunisia S.A.R.L.
 Hriza
 7026 El Azib, Bizerte
 Tunesien / Tunisia
 Phone +216 72 - 45 10 10
 info.tunisia@era-contact.de

era-contact (Suzhou) Co., Ltd.
 Building P,
 No. 9 Chang Yang Street,
 Suzhou Industrial Park
 Jiangsu, 215024, P.R. China
 Phone +86 512 - 6299 1800
 info.china@era-ct.com

era-contact Turkey
 Demiryolu Sistemleri San.
 ve Tic. Ltd. Sti.
 Cerkesli OSB Mahallesi,
 Imes-9 Caddesi, No:31,
 41455 Dilovasi, Kocaeli
 Türkei / Turkey
 Phone +90 532 504 38 09
 info.turkey@era-contact.com.tr

era-contact USA, LLC
 1475 Smith Grove Road
 Liberty, SC 29657
 USA
 Phone +1 (864) 777-6060
 info.usa@era-contact.com