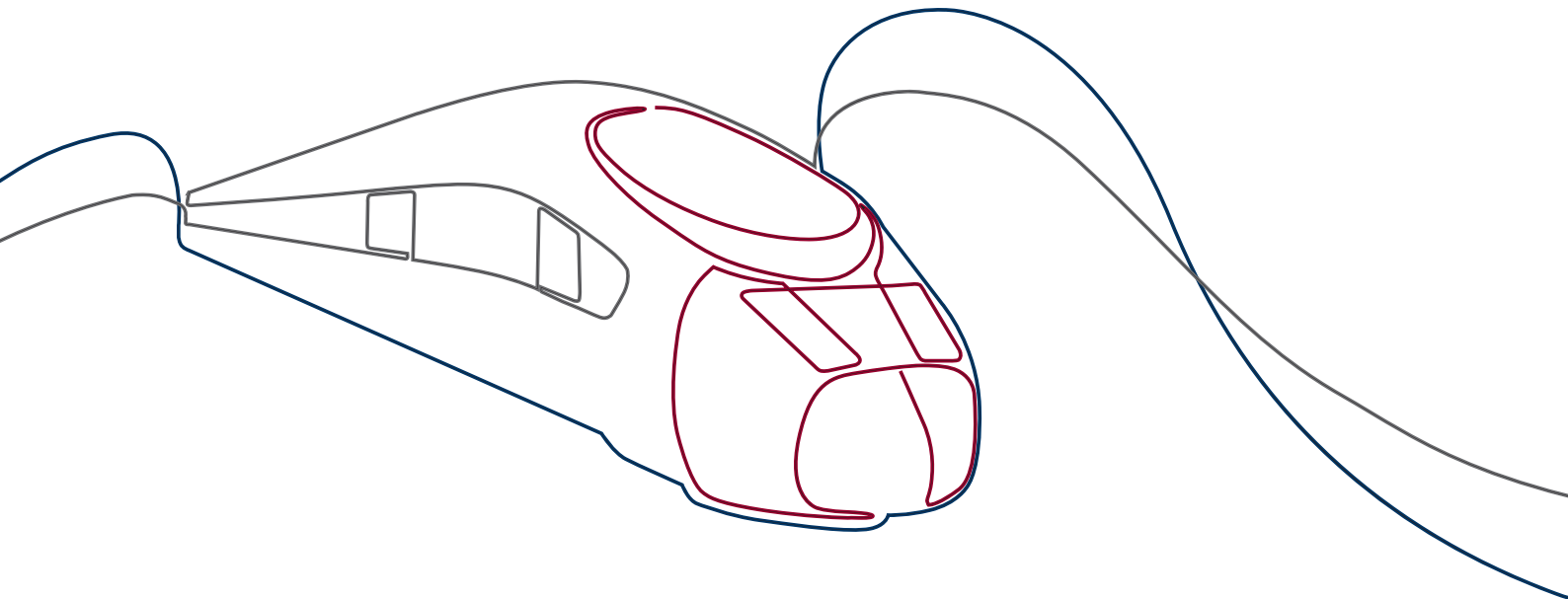


ETHERNET UPGRADE SOLUTIONS



Commitment to quality: We supply this product in accordance with our tested and certified quality standard



DIN EN ISO 9001:2015
Certified
Quality Management System



DIN EN 15085-2 CL1
International welding
certification for railway
vehicles



**IRIS Certification® based on
ISO/TS 22163:2017**
Quality management standard
for the railway industry

HANDHELD MEASURING

The *handheld test device* makes it possible to directly check that existing electrical couplers with one or more era-transceivers® are working properly, i.e. checking the coupler itself.

Transmission rates of 100 and 1000 Mbit/s can be tested in a two-phase process: The optical interface of the era-transceiver® is tested in the initial quick check.

→ **Special characteristic:** No additional wiring is required for this test.

The optical and electrical interface of the era-transceiver® can be inspected in a second test, which requires additional wiring.



Dimensions (LxWxH):	approx. (248x103x38) mm
Weight including batteries:	540 g
Voltage range of the power supply unit:	100 to 240 V AC
Input voltage for the test device:	6 V DC
Mains plug:	Type C (European plug)
Transmission rates:	100 / 1000 MBit/s
Data interfaces:	RJ45

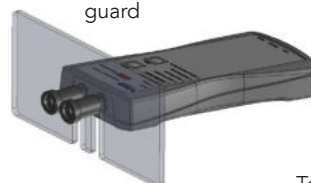
The test device incl. storage case



Battery size:	Mignon cells (type: AA)
Number of batteries:	4
Laser class:	1
Degree of protection:	IP20
Temperature range during operation:	-10 °C to 60 °C non condensing
Air humidity during operation:	0 to 90 % non condensing

There is the option to use a **contact guard** during testing as an additional safety measure.

Optional for increased protection:
Handheld test device with contact guard

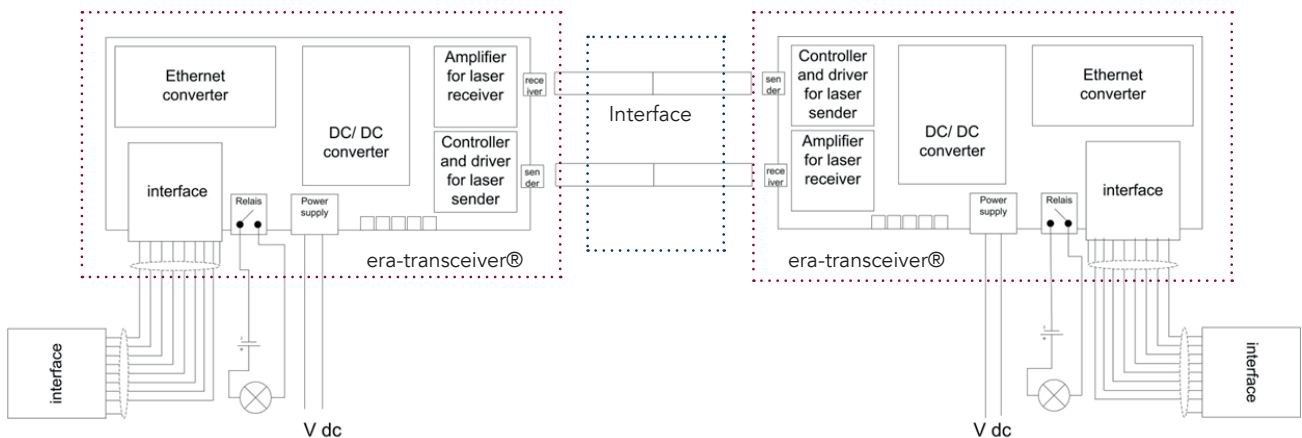


Technical data subject to change.

era-transceiver® – DATA PULSES WITH NO WEAR

The *era-transceiver®* is a unique contactless system for high-speed data transmission with full galvanic isolation, which means that no mechanical wear is caused on the contact itself. As a result, you benefit from a longer service life and cost savings throughout the entire product life cycle.

The *era-transceiver®* provides an ideal data transmission solution for both the initial equipping of a new vehicle and for the upgrading (Plug & Play ETHERNET, ETHERNET-UPGRADE-SOLUTION) of existing fleets and older models of railway vehicles.



Transmission principle of the *era-transceiver®*

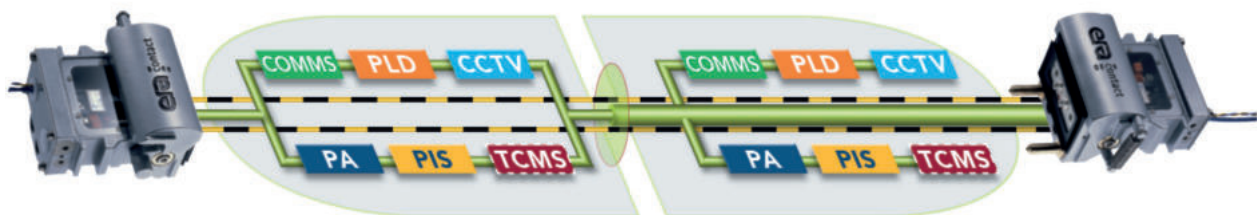
The incoming electrical Ethernet signal is converted into an optical signal. The optical signal is received on the opposite side and is converted back into an electrical signal. This involves correcting the level and timing (data clock recovery). Galvanic isolation is achieved using the interface.

Optical signals are free from EMC influence and potential shifts and are resistant to relative movements. The transmission unit operates in full-duplex mode, i.e. data is sent and received simultaneously.

era-transceiver® – PRODUCT RANGE

era-contact manufactures the 100 Mbit/s and 1000 Mbit/s versions in series production – versions up to 10 Gbit/s are available upon customer request.

Data rate	100 MBit/s	1000 MBit/s
Data interface	RJ45 (24V DL) M12 D-coded (24... 48 V DC)	M12, X-coded SC multimode
Cable requirement	min. CAT 5	min. CAT 7
Power supply	24 V DC	24 ... 48 V DC, 110 DC
General power consumption	< 5 W	< 5 W
Operating temperature range	RJ45: -25 ... +85 °C M12: -40... +35 °C	-40 ... +85 °C
Bit error rate	< 10 ⁻¹²	< 10 ⁻¹²



PA	Public Address
PIS	Passenger Information System
CCTV	Closed Circuit Television
COMM	Communications Systems
PLD	Passenger Load Determination
TCMS	Train Control Management System



OUR BENEFITS FOR YOU:

- Punctuality
- Consistently high quality all over the world
- Comprehensive service wherever you are in the world
- Years of expertise for your product
- International presence
- On-site engineering service – from prototyping to after-sales
- Original manufacturer
- A team just for you



www.aichele-group.com
www.bremi.de
www.era-contact.com
www.streicherplast.de

aichele GROUP
GmbH + Co. KG
Gewerbstraße 44
75015 Bretten
Deutschland / Germany
Phone +49 (0)70 32 - 9 55 30 0
info@aichele-group.com

BREMI Fahrzeug-Elektrik
GmbH + Co. KG
Grüner Weg 1
19303 Dömitz
Deutschland / Germany
Phone +49 (0)38 758 - 304 0
info@bremi.de

BREMI Fahrzeug-Elektrik
GmbH + Co. KG
Vertriebs- und Logistikzentrum
Einsteinstraße 1
71083 Herrenberg
Deutschland / Germany
Phone +49 (0)70 32 - 955 30 0
info@bremi.de

streicherplast GmbH + Co. KG
Friedhofstraße 4
78588 Denkingen
Deutschland / Germany
Phone +49 (0)74 24 98 17-0
info@streicherplast.de

era-contact GmbH Germany
Gewerbstraße 44
75015 Bretten-Gölshausen
Deutschland / Germany
Phone +49 (0)72 52 - 971 0
info.germany@era-contact.de

era-contact Tunisia S.A.R.L.
Hriza
7026 El Azib, Bizerte
Tunesien / Tunisia
Phone +216 72 - 45 10 10
info.tunisia@era-contact.de

era-contact (Suzhou) Co., Ltd.
Building P,
No. 9 Chang Yang Street,
Suzhou Industrial Park
Jiangsu, 215024,
P.R. China
Phone +86 5 12 - 6299 1800
info.china@era-ct.com

era-contact Turkey
Demiryolu Sistemleri San.
ve Tic. Ltd. Sti.
Cerkesli OSB Mahallesi,
Imes-9 Caddesi, No:31,
41455 Dilovasi, Kocaeli
Türkei / Turkey
Phone +90 532 504 38 09
info.turkey@era-contact.com.tr

era-contact USA, LLC
1475 Smith Grove Road
Liberty, SC 29657
USA
Phone +1 (864) 777-6060
info.usa@era-contact.com